

SURFACE MINING EXCAVATOR KOMATSU PC 8000 / ELECTRICAL DRIVE / 42 m3

Item	#. ACTIVO	ST	AD	MATRICULA	SERIE CHASIS	PO	PA	HORAS DE OPERACION	FECHA DE OPERACION
1	A0070001	1706	no tiene	MC024377	12041	B52240	8429520000	83.919	27/03/2004
2	A0070002	1815	no tiene	MC024378	12045	B52240	8429520000	67.007	27/05/2005
3	A0070003	1299	210	MC024379	12047	B52240		66.585	27/12/2005
4	A007004	1771	no tiene	MC024380	12055	C13078/001	8429510000	61.479	28/11/2007
5	A007005	1706	no tiene	MC026060	12056	C13078	84295100000	59.401	24/01/2008
6	A007006	1706	no tiene	MC024381	12057	C13078	84295100000	60.167	25/02/2008

ELECTRIC MOTOR

MARCA: ABB

MODELO: AMA500L4A BAXYH

ITEM COMMENTS:

MARCA: ABB , SERVICIO: S1 TYPE: AMA 500L 4A BAXYH PHASES: 3 CONNECTION: Y INSUL: F IP: 55 WEIGHT: 5700 KG
IC: 611 IM: 1001 AMB: -30 + 55 C No. 4574642 OUTPUT: 1450 KW VOLTAJE: 7200 HZ: 60 SPEED: 1767 RPM CORRENT: 140A
POWER FACTOR: 0.88 RODAMIENTOS: 6330M/C3. CONTIENE 60 BOBINAS. GRASA: ESSO UNIREX N2

DELIVERY: Disassembled, complete, in their main components/modules, ready to load on truck or railcar. The seller also has a lot of new/unused spare parts for these equipments that might be bid separately from the PC 8000s.

LOCATION: Northern Colombia

REGISTRO FOTOGRÁFICO y HOROMETROS DE PRINCIPALES COMPONENTES

PC 8000 - K1



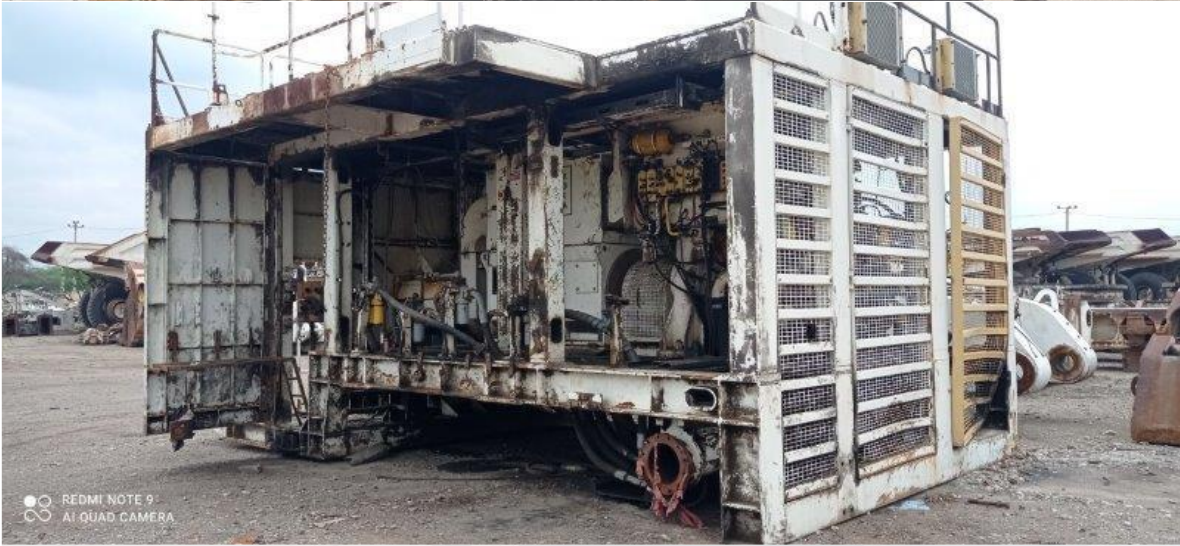
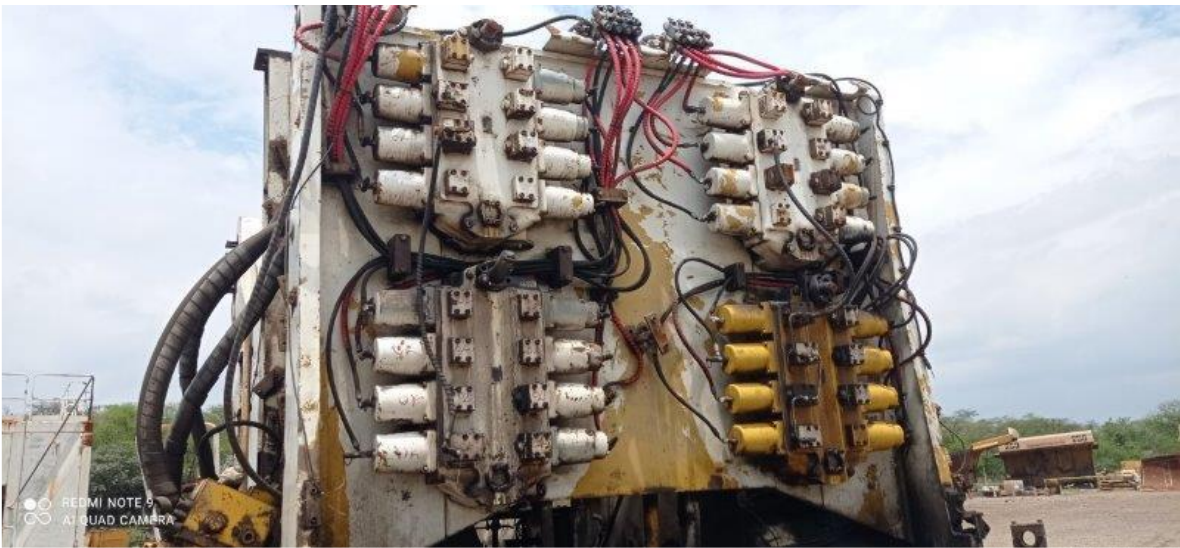
Item	Installation Position/	Total Operating Hours	Fitted Equipmen	/Description	P/N
32	CBOM,F ,CAJA BOMBAS ,FRONTAL	60,462.34	00721012	CAJA DE BOMBAS P.T.O. PALAS PC8000	89680040
33	CBOM,T ,CAJA BOMBAS ,TRASERA	34,665.73	00721008	CAJA DE BOMBAS P.T.O. PALAS PC8000	89680040
34	CCUC,D ,CILINDRO CUCHARON ,DERECHA	21,358.18	00772806	CILINDRO .CCUC PALA PC 8000 FRONTAL	91397540
35	CCUC,I ,CILINDRO CUCHARON ,IZQUIERDA	8,049.71	00772012-1	CILINDRO CUCHARON PALA PC8000	91397540
36	CEMP,D ,CILINDRO EMPUJE ,DERECHA	5,114.01	00771803-1	CILINDRO BRAZO PALA FRONT KOMATSU PC8000	91583066
37	CEMP,I ,CILINDRO EMPUJE ,IZQUIERDA	32,427.36	00771016	CILINDRO DEL BRAZO PALA PC8000	91583066
38	CLEV,D ,CILINDRO LEVANTE ,DERECHA	26,878.15	00770017	CILINDRO LEVANTE PALA KOMATSU PC8000	92680040
0	CLEV,I ,CILINDRO LEVANTE ,IZQUIERDA	20,216.77	00770012	CILINDRO LEVANTE PALA KOMATSU PC8000	92680040
69	MELE,F ,MOTOR ELECTRICO ,FRONTAL	47,328.58	00733010	MOTOR ELECTRICO PALA KOMATSU PC8000	92701040
70	MELE,T ,MOTOR ELECTRICO ,TRASERA	66,832.72	00733006	MOTOR ELECT.FRONTAL PALA PC8000	92701040
82	MPRO,IF ,MOTOR DE PROPULSION ,IZQUIERDA FRONTAL	83,882.27	00738003	Motor de Propel izquierdo Delantero	65489140
83	MPRO,IT ,MOTOR DE PROPULSION ,IZQUIERDA TRASERA	83,882.27	00738004	Motor de Propel izquierdo trasero	65489140
122	TPRO,D ,TRANSMISION PROPEL ,DERECHA	56,854.85	00723008	TRANSMISION PROPEL PALA PC8000	91271040
123	TPRO,I ,TRANSMISION PROPEL ,IZQUIERDA	18,640.19	00723003-1	TRANSMISION PROPEL PALA PC8000	91271040

PC 8000 - K2



Item	Installation Position/	Total Operating Hours	Fitted Equipment	/Description	P/N
32	CBOM,F ,CAJA BOMBAS ,FRONTAL	28,510.66	00721007	CAJA DE BOMBAS P.T.O. PALAS PC8000	89680040
33	CBOM,T ,CAJA BOMBAS ,TRASERA	23,383.70	00721902	CAJA BOMBA (PTO) PALA KOMATSU PC8000	89680040
34	CCUC,D ,CILINDRO CUCHARON ,DERECHA	67,006.78	00772804	CILINDRO . CCUC PALA PC 8000 FRONTAL	91397540
35	CCUC,I ,CILINDRO CUCHARON ,IZQUIERDA	5,437.00	00772016	CILINDRO CUCHARON PALA FRONTAL PC8000	91397540
36	CEMP,I ,CILINDRO EMPUJE ,IZQUIERDA	19,749.80	00771018	CILINDRO DEL BRAZO PALA PC8000	91583066
37	CLEV,D ,CILINDRO LEVANTE ,DERECHA	52,473.54	00770007	CILINDRO LEVANTE PALA KOMATSU PC8000	926 800 40
38	CLEV,I ,CILINDRO LEVANTE ,IZQUIERDA	10,837.71	00770906	CILINDRO DE LEVANTE PALA FRONTAL PC8000	92680040
67	MELE,F ,MOTOR ELECTRICO ,FRONTAL	60,808.91	00733001	MOTOR ELECTRICO PRINCIPAL FRONTAL KOMATS	92701040
68	MELE,T ,MOTOR ELECTRICO ,TRASERA	36,714.88	00733901	MOTOR ELECTRICO PRINCIPAL FRONTAL KOMA	92701040
78	MPRO,DF ,MOTOR DE PROPULSION ,DERECHA FRONTAL	66,975.11	00738005	Motor de Propel derecho frontal	65489140
79	MPRO,DT ,MOTOR DE PROPULSION ,DERECHA TRASERA	67,006.78	00738007	Motor de Propel derecho trasero	654 891 40
119	TPRO,I ,TRANSMISION PROPEL ,IZQUIERDA	11,283.49	00723009-1	TRANSMISION PROPEL PALA PC8000	912 710 40















PC 8000 - K3

Componentes Pala	Horas operación
Corona de giro	27.800
Cuarto de alta X1	66.600
Cuarto de alta X2	66.600
Boom	12.500
Stick	12.500
Balde	5.800
Main frame	66.600
House machine – Casa máquina	66.600
Enfriadores principales de aceite hidráulico	2.100
Contra pesa	66.600
Base del tambor enrollable	66.600











PC 8000 - K4



Item	Installation Position/	Total Operating Hours	Fitted Equip	/Description	P/N
32	CBOM,F ,CAJA BOMBAS ,FRONTAL	17,303.89	00721005-1	CAJA DE BOMBAS P.T.O. PALAS PC8000	89680040
33	CBOM,T ,CAJA BOMBAS ,TRASERA	4,744.26	00721002	CAJA DE BOMBAS PALA KOMATSU PC8000	89680040
34	CCUC,D ,CILINDRO CUCHARON ,DERECHA	12,531.78	00772802	CILINDRO CCUC PALA PC 8000 FRONTAL	91397540
35	CCUC,I ,CILINDRO CUCHARON ,IZQUIERDA	40,513.06	00772007	CILINDRO CUCHARON PALA PC8000	91397540
36	CEMP,D ,CILINDRO EMPUJE ,DERECHA	1,875.04	00771009-1	CILINDRO DE EMPUJE PALAS PC8000	91583066
37	CEMP,I ,CILINDRO EMPUJE ,IZQUIERDA	5,965.55	00771802-1	CILINDRO BRAZO PALA FRONT KOMATSU PC8000	91583066
38	CLEV,D ,CILINDRO LEVANTE ,DERECHA	35,984.35	00770015	CILINDRO LEVANTE PALA KOMATSU PC8000	926 800 40
39	CLEV,I ,CILINDRO LEVANTE ,IZQUIERDA	18,354.17	00770018	CILINDRO LEVANTE PALA KOMATSU PC8000	92680040
69	MELE,F ,MOTOR ELECTRICO ,FRONTAL	35,731.52	00733904	MOTOR ELECT.FRONTAL PALA PC8000	92701040
70	MELE,T ,MOTOR ELECTRICO ,TRASERA	76,625.64	00733002	MOTOR ELECT. PALA RETRO PC8000	92701040
81	MPRO,DT,MOTOR DE PROPULSION ,DERECHA TRASERA	51,192.65	00738015	Motor de Propel derecho trasero	65489140
82	MPRO,IF,MOTOR DE PROPULSION ,IZQUIERDA FRONTAL	48,308.01	00738014	Motor de Propel izquierdo frontal	654 891 40
123	TPRO,D ,TRANSMISION PROPEL ,DERECHA	33,919.26	00723002	TRANSMISION PROPEL PALA PC8000	91271040
124	TPRO,I ,TRANSMISION PROPEL ,IZQUIERDA	42,761.89	00723902	TRANSMISION PROPEL PC8000	912 710 40



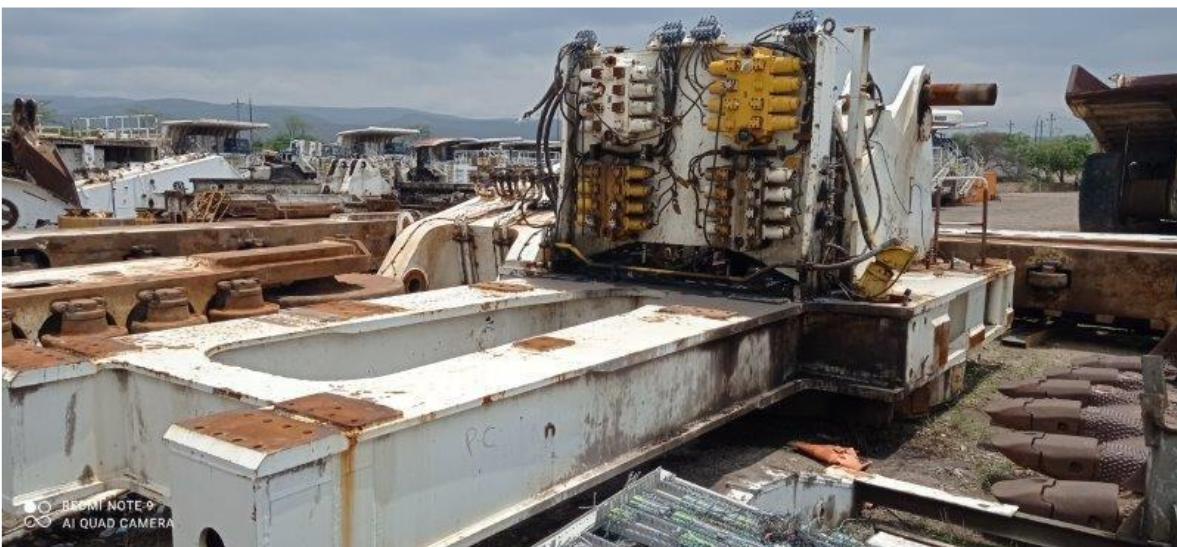




PC 8000 - K5



Item	Installation Position/	Total Operating Hours	Fitted Equipment	/Description	P/N
32	CBOM,F ,CAJA BOMBAS ,FRONTAL	18,338.37	00721903	CAJA BOMBA (PTO) PALA KOMATSU PC8000	89680040
33	CBOM,T ,CAJA BOMBAS ,TRASERA	59,400.89	00721001	CAJA DE BOMBAS P.T.O. PALAS PC8000	89680040
34	CCUC,I ,CILINDRO CUCHARON ,IZQUIERDA	15,345.55	00772807	CILINDRO .CCUC PALA PC 8000 FRONTAL	91397540
35	CEMP,D ,CILINDRO EMPUJE ,DERECHA	51,015.65	00771008	CILINDRO BRAZO PALA FRONTAL PC8000	91583066
36	CEMP,I ,CILINDRO EMPUJE ,IZQUIERDA	8,358.42	00771800	CILINDRO BRAZO PALA FRONT KOMATSU PC8000	91583066
37	CLEV,D ,CILINDRO LEVANTE ,DERECHA	49,139.22	00770009	CILINDRO LEVANTE PALA KOMATSU PC8000 F	926 800 40
38	CLEV,I ,CILINDRO LEVANTE ,IZQUIERDA	8,358.42	00770905-1	CILINDRO DE LEVANTE PALA FRONTAL PC8000	92680040
67	MELE,F ,MOTOR ELECTRICO ,FRONTAL	49,148.89	00733902	MOTOR ELECT.FRONTAL PALA PC8000	92701040
68	MELE,T ,MOTOR ELECTRICO ,TRASERA	31,464.24	00733008	MOTOR ELECT. PALA RETRO PC8000	92701040
78	MPRO,DF ,MOTOR DE PROPULSION ,DERECHA FRONTAL	59,400.89	00738017	Motor de Propel derecho frontal	65489140
79	MPRO,DT ,MOTOR DE PROPULSION ,DERECHA TRASERA	59,400.89	00738019	Motor de Propel derecho trasero	654 891 40
119	TPRO,D ,TRANSMISION PROPEL ,DERECHA	18,338.37	00723903	TRANSMISION PROPEL PC8000	91271040
120	TPRO,I ,TRANSMISION PROPEL ,IZQUIERDA	66,561.13	00723005	TRANSMISION PROPEL PALA PC8000	912 710 40

















REDMI NOTE 9
AI QUAD CAMERA



REDMI NOTE 9
AI QUAD CAMERA



REDMI NOTE 9
AI QUAD CAMERA





PC 8000 - K6



Item	Installation Position/	Total Operating Hours	Fitted Equipment	/Description	P/N
32	CBOM,F ,CAJA BOMBAS ,FRONTAL	42,397.87	00721009	CAJA DE BOMBAS P.T.O. PALAS PC8000	89680040
33	CBOM,T ,CAJA BOMBAS ,TRASERA	55,254.88	00721003	P.T.O. CAJA DE BOMBAS FRONTAL PC8000	89680040
34	CCUC,D ,CILINDRO CUCHARON ,DERECHA	10,761.90	00772801	CILINDRO .CCUC PALA PC 8000 FRONTAL	91397540
35	CCUC,I ,CILINDRO CUCHARON ,IZQUIERDA	8,957.69	00772015-1	CILINDRO CUCHARON PALA FRONTAL PC8000	91397540
36	CEMP,D ,CILINDRO EMPUJE ,DERECHA	9,832.77	00771015-1	CILINDRO DEL BRAZO PALA KOMATSU PC8000	91583066
37	CEMP,I ,CILINDRO EMPUJE ,IZQUIERDA	10,148.52	00771807	CILINDRO BRAZO PALA FRONT KOMATSU F	91583066
38	CLEV,D ,CILINDRO LEVANTE ,DERECHA	6,612.19	00770907	CILINDRO DE LEVANTE PALA FRONTAL PC8000	92680040
39	CLEV,I ,CILINDRO LEVANTE ,IZQUIERDA	725.88	00770010-1	CILINDRO LEVANTE PALA KOMATSU PC8000	92680040
69	MELE,F ,MOTOR ELECTRICO ,FRONTAL	61,718.61	00733009	MOTOR ELECTRICO PRINCIPAL PC8000	92701040
70	MELE,T ,MOTOR ELECTRICO ,TRASERA	43,621.32	00733903	MOTOR ELECT.FRONTAL PALA PC8000	92701040
77	MPRO,DF,MOTOR DE PROPULSION ,DERECHA FRONTAL	60,166.54	00738021	Motor de Propel derecho frontal	65489140
78	MPRO,DT,MOTOR DE PROPULSION ,DERECHA TRASERA	60,166.54	00738023	Motor de Propel derecho trasero	65489140
117	TPRO,D ,TRANSMISION PROPEL ,DERECHA	68,398.83	00723004	TRANSMISION PROPEL PALA PC8000	91271040
118	TPRO,I ,TRANSMISION PROPEL ,IZQUIERDA	18,529.74	00723007-1	TRANSMISION PROPEL PALA PC8000	91271040



















ADDITIONAL INFORMATION

- Price: The Seller has defined a base price around USD 300k for each equipment as it is, disassembled.

- Payment: Transfer to Seller's bank account before retiring the goods.

- Quantity: 6 units, that may be offered in total or partial. Each unit is sold disassembled but complete. The Seller has no interest in bids for single components or parts, except maybe for Unit K3.

- Delivery: The components are delivered where they are. The Seller may provide railcar transportation to Puerto Bolivar, La Guajira, at no additional cost prior coordination.
The Buyer and Sellers shall agree on the time required to remove the goods from the Seller's premises.

- Inspections: It is possible to visit and inspect the goods prior coordination.

- Location: North of Colombia.

- Condition: Used equipment and components, total hours indicated for the whole equipment and each component in this document.

- Offer selection: Once the offer is considered sound, before acceptance a due diligence will be performed for the Buyer.